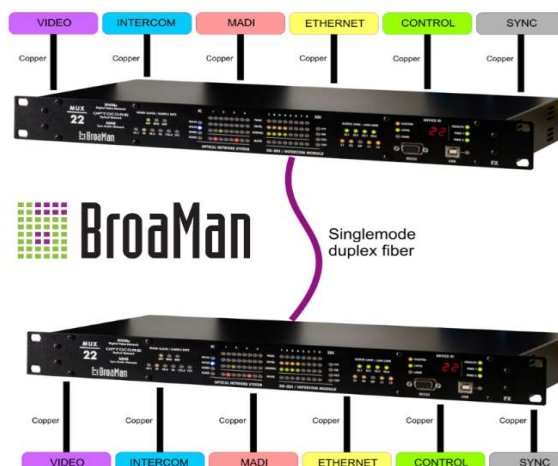


BroaMan MUX 22 kampagne

Mux22 is a device, which combines different formats of video, intercom and data in a single duplex fiber cable. The number of video inputs and outputs can be specified when ordering, by selecting dual input or dual output modules. Every single channel and transceiver in the device can be controlled and monitored in real time remotely using Optocore Control application.

The device is fully compatible with all Optocore products, which makes it very flexible. It is very easy to add analog or digital audio to the Mux22 by extending it with the Optocore devices. Still everything is transported via the same single duplex fiber cable.

Mux22 can be used as a point-to-point pair to transport multiple signals between two locations. Furthermore it can be used as a stagebox to Route66 Video Router – in that case it becomes a remote I/O device for the star-based larger system.



		35%	15%
Mux22 - IVT/INTERCOM - IC422	8 x 3G SDI, 4 x Clear-Com 4-wire Intercom, 2 x PSU, 1 x SM Optocore Link, 2 x SANE/LAN/MADI Cat5, 2 x LAN, 4 x RS485/422 or 4 x GPIO, 2nd PSU, V-SYNC I/O, 1 x 1310nm Aux	64.813	32.407 42.378
Mux22 - IVT/INTERCOM - IC485	8 x 3G SDI, 4 x RTS 4-wire Intercom, 2 x PSU, 1 x SM Optocore Link, 2 x SANE/LAN/MADI Cat5, 2 x LAN, 4 x RS485/422 or 4 x GPIO, 2nd PSU, V-SYNC I/O, 1 x 1310nm Aux	64.813	32.407 42.378
Mux22 - IVT/INTERCOM - IC444	8 x 3G SDI, 4 x Line In, 4 x Line Out, 4 x GPIO , 2 x PSU, 1 x SM Optocore Link, 2 x SANE/LAN/MADI Cat5, 2 x LAN, 4 x RS485/422 or 4 x GPIO, 2nd PSU, V-SYNC I/O, 1 x 1310nm Aux	64.813	32.407 42.378
Mux22 - IVT/INTERCOM - ICAES	8 x 3G SDI, 4 x AES3 4-wire Intercom, 2 x PSU, 1 x SM Optocore Link, 2 x SANE/LAN/MADI Cat5, 2 x LAN, 4 x RS485/422 or 4 x GPIO, 2nd PSU, V-SYNC I/O, 1 x 1310nm Aux	64.813	32.407 42.378
Mux22 - IVT/INTERCOM - ICBNC	8 x 3G SDI, 8 x duplex AES3id BNC intercom, 2 x PSU, 1 x SM Optocore Link, 2 x SANE/LAN/MADI Cat5, 2 x LAN, 4 x RS485/422 or 4 x GPIO, 2nd PSU, V-SYNC I/O, 1 x 1310nm Aux	64.813	32.407 42.378
Mux22 - IVT/IVT - MADI OPT	8 x 3G SDI, 4 x duplex fiber MADI , 2 x PSU, 1 x SM Optocore Link, 2 x SANE/LAN/MADI Cat5, 2 x LAN, 4 x RS485/422 or 4 x GPIO, 2nd PSU, V-SYNC I/O, 1 x 1310nm Aux	71.175	35.588 46.538
Mux22 - IVT/IVT - MADI BNC	8 x 3G SDI, 4 x dual coax MADI , 2 x PSU, 1 x SM Optocore Link, 2 x SANE/LAN/MADI Cat5, 2 x LAN, 4 x RS485/422 or 4 x GPIO, 2nd PSU, V-SYNC I/O, 1 x 1310nm Aux	71.175	35.588 46.538
Mux22 - IVT/IVT	16 x 3G SDI , 2 x PSU, 1 x SM Optocore Link, 2 x SANE/LAN/MADI Cat5, 2 x LAN, 4 x RS485/422 or 4 x GPIO, 2nd PSU, V-SYNC I/O, 1 x 1310nm Aux	96.038	48.019 62.794

2 stk. pris

pr. stk. v/ 2 stk.

Tilbud kun gældende for ordrer indgivet og accepteret indtil **29. marts 2018 kl. 12.00**
 Alle priser er ekskl. 25% moms

Anders Christensen
 Key Account Manager - Pro Audio

email: anders.christensen@danmon.com
 web: www.danmon.dk / www.soundware.dk